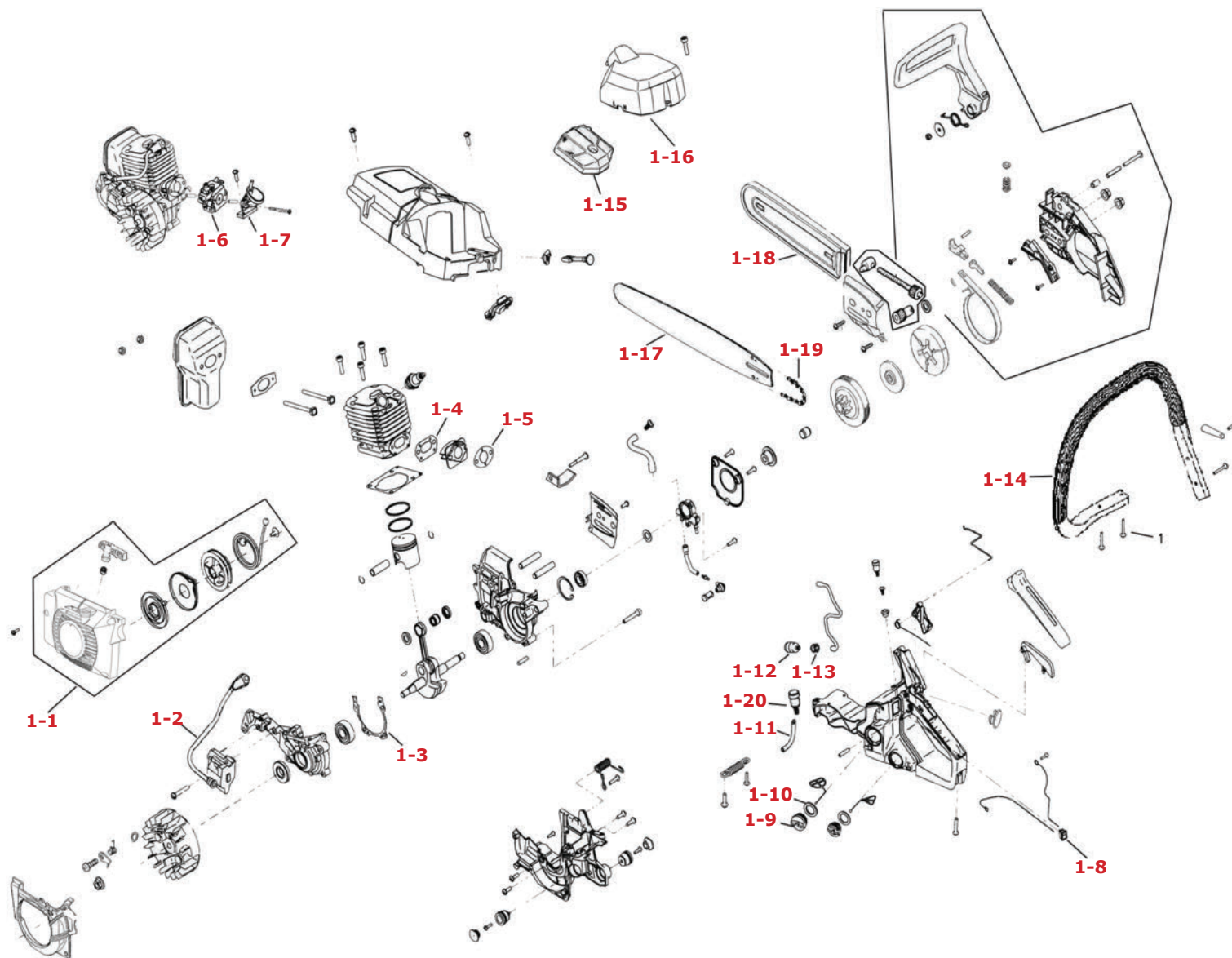


SANLI Chainsaw YD-38G



Item No.	Part No.	Description
YD-38G		
1-1	SLCS001	Starter assembly
1-2	SLCS002	Magneto stator
1-3	SLCS003	Box gasket
1-4	SLCS004	Carburettor gasket (2)
1-5	SLCS005	Carburettor gasket (1)
1-6	SLCS006	Carburettor (rising)
1-7	SLCS007	Carburettor inlet pipe
1-8	SLCS008	Stop switch
1-9	SLCS009	Fuel tank cap
1-10	SLCS010	Tank cap gasket
1-11	SLCS011	Oil tank vent pipe
1-12	SLCS012	Fuel filter
1-13	SLCS033	Iron sleeve
1-14	SLCS013	Left handlebar
1-15	SLCS014	Air filter assembly
1-16	SLCS015	Air filter cover
1-17	SLCS016	Guide bar
1-18	SLCS017	Guide bar cover
1-19	SLCS018	Chain
1-20	SLCS031	Air filter assembly



SANLI Chainsaw YD-45G



Item No.	Part No.	Description
YD-45G		
2-1	SLCS019	Starter assembly
2-2	SLCS017	Guide bar cover
2-3	SLCS020	Magneto stator
2-4	SLCS021	Box gasket
2-5	SLCS022	Lubricating oil inlet pipe
2-6	SLCS023	Chain oil filter
2-7	SLCS024	Brake handle
2-8	SLCS025	Chain (Kangxin)
2-9	SLCS026	Guide bar (Kangxin)
2-10	SLCS009	Fuel tank cap
2-11	SLCS010	Tank cap gasket
2-12	SLCS027	Carburettor (rising)
2-13	SLCS028	Air filter element assembly
2-14	SLCS029	Nozzle carburettor
2-15	SLCS030	Left handlebar
2-16	SLCS031	Air filter assembly (Dongcheng)
2-17	SLCS032	Fuel pipe
2-18	SLCS033	Iron sleeve
2-19	SLCS012	Fuel filter
2-20	SLCS034	Air filter cover

