

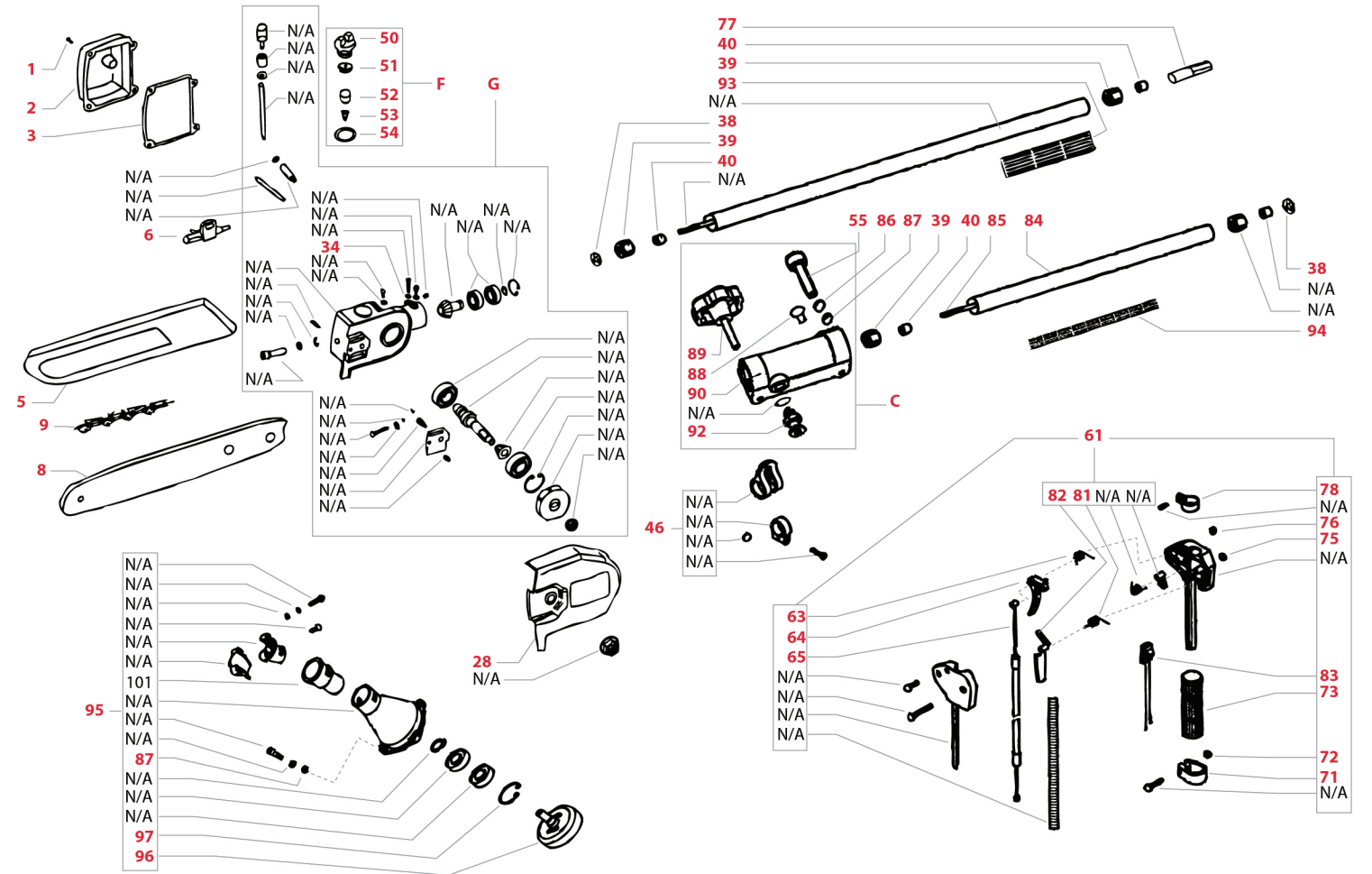
POLE SAW SPS260 & CHAINSAW ATTACHMENT

Item	Part No.	Description
Case Cover		
1	PS3-1	Oil cover screw M4 x 12
2	PS3-2	Oil cover
3	PS3-3	Oil cover gasket
Chainsaw Head Components		
5	PS3-5	Chain bar safety cover
6	PS3-6	Oil pump assembly
8	10D0-CL-PO	Chainsaw bar
9	D-050-50DL	Chain
Oil Filler Components		
F	PS3-F	Oil filler cap assembly
50	PS3-50	Oil filler cap
51	PS3-51	Inner oil cover
52	PS3-52	Sleeve
53	PS3-53	Valve
54	PS3-54	'O' ring
Clutch Drum Component		
95	BCS2-23	Clutch drum component
96	BCS2-24	Clutch drum
97	BC2-33	Circlip 35
101	BC2-55	Rubber cover
34	BC2-62	Washer 5
87	BC2-58	Washer 6
Harness Tube Clamp		
46	BCS2-38	Holder assembly
Long Shaft Component		
39	BCS2-44	Rubber bush
40	BCS2-45	Oil bearing 8 x 14 x 14
77	PS3-77	Joint B
93	PS3-93	Rubber pipe 2
38	PS3-38	Washer
Short Shaft Component		
39	BCS2-44	Rubber bush
40	BCS2-45	Oil-bearing 8 x 14 x 14
85	PS3-85	Short shaft
84	PS3-84	Short tube
94	PS3-94	Rubber pipe 1
38	PS3-38	Washer



Picture for illustration purposes only.

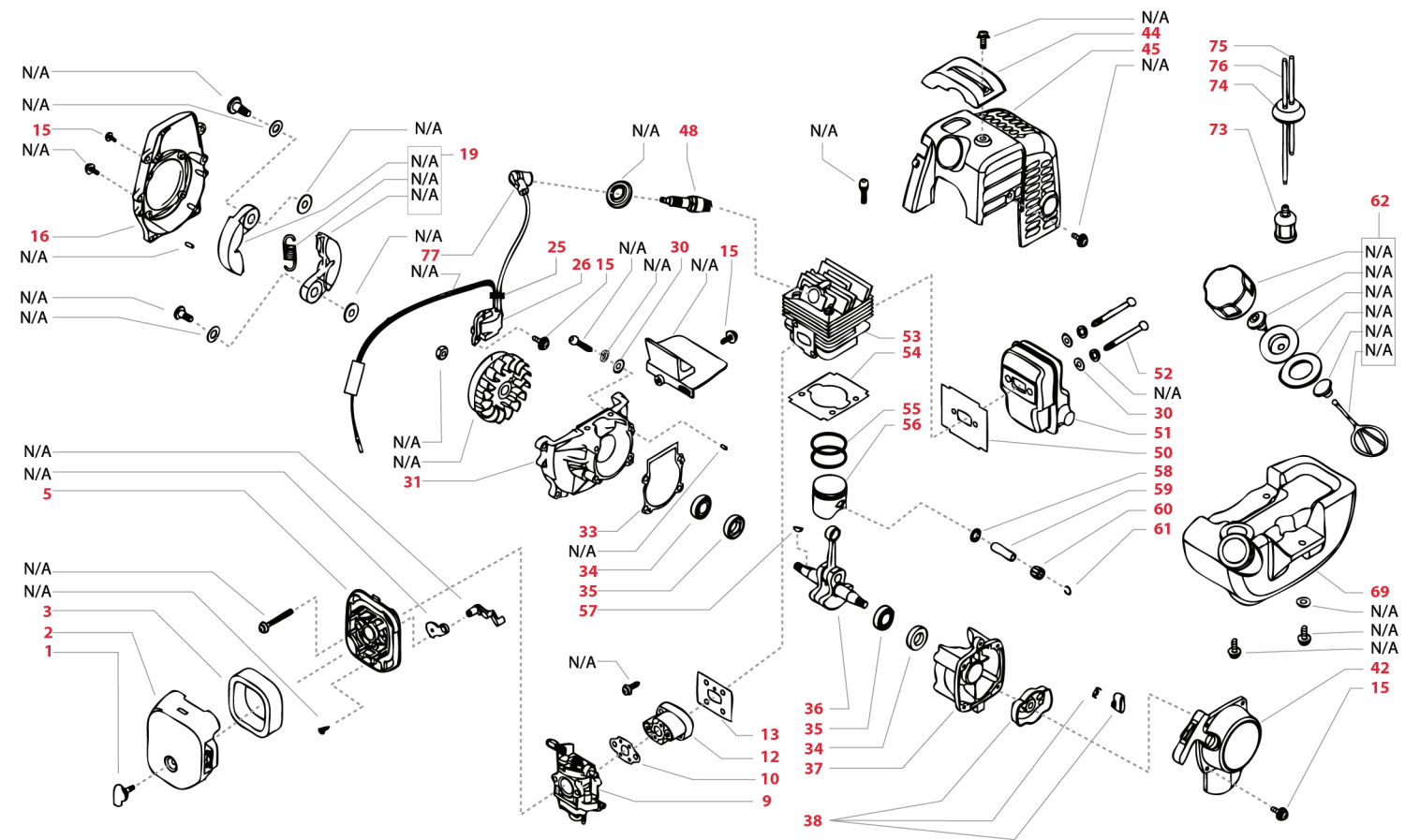
Item	Part No.	Description
Throttle Lever Components		
61	BC2-LA	Throttle lever assembly
63	BC2-46	Spring
64	BC2-48	Throttle trigger
65	BC2-49	Throttle cable
71	BC2-38	Clamp
72	BC2-7	Nut M5
73	BC2-39	Rubber handle cover
75	BC2-7	Nut M5
76	BC2-7	Nut M5
78	BC2-41	Clamp
81	BC2-45	Spring
82	BC2-47	Safety lever
83	BC2-53	Stop switch assembly
Pipe Connector Components		
C	PS3-C	Pipe connector assembly
55	PS3-55	Screw M6 x 35
86	BC2-59	Spring washer 6mm black
87	BC2-58	Flat washer 6mm black
88	BC2-22	Screw M5 x 12
89	PS3-89	Locking knob
90	PS3-90	Pipe joint
92	PS3-92	Locating pin
Gear Case Components		
G	PS3-G	Gear case assembly inc bar
28	PS3-28	Gear case cover



26CC ENGINE (to suit BCB260, BCS260, SPS260)

Item	Part No.	Description
Air Filter Components		
1	EN1-1	Air filter cover screw
2	EN1-2	Air filter cover
3	EN1-3	Air filter
5	EN1-5	Air filter cover base
Carburettor Components		
9	EN1-9	Carburettor assembly
10	EN1-10	Gasket carby side
11	EN1-11	Screw M5 x 20
12	EN1-12	Inlet manifold
13	EN1-13	Gasket engine side
Flywheel Components		
15	EN1-15	Screw M4x16
16	EN1-16	Flywheel cover
Engine Cover Components		
44	EN1-44	Top cover
45	EN1-45	Engine cover
Ignition Coil Components		
15	EN1-15	Screw M4x16
25	EN1-25	Primary cord grommet
26	EN1-26	Ignition coil assembly
27	EN1-27	Flywheel
77	EN1-77	Spark plug boot
Crankcase Components		
30	EN1-30	Washer
31	EN1-31	Front half crankcase
33	EN1-33	Crankcase gasket
34	EN1-34	Oil seal 12 x 22 x 7
35	EN1-35	Ball bearing 6001/P5
36	EN1-36	Crankshaft / conrod assembly
37	EN1-37B	Rear half crankcase
15	EN1-15	Guid plate screw M4 x 16
57	EN1-57	Crankshaft / flywheel key

Item	Part No.	Description
Starter Pawl Components		
38	EN1-38	Starter pulley
Starter & Starter Screw		
42	EN1-42	Starter assembly
15	EN1-15	Screw M4 x 16
Fuel Tank Components		
62	EN1-62	Fuel tank cap assembly
69	EN1-69	Fuel tank
73	EN1-73	Fuel tank filter
74	EN1-74	Fuel tank grommet
75	EN1-75	Inlet fuel hose
76	EN1-76	Outlet fuel hose
Clutch Components		
19	EN1-19	Clutch assembly
Spark Plug Components		
48	RCJ6Y/BPMR7A	Spark plug
Muffler Assembly		
52	EN1-52	Screw M5x55
30	EN1-30	Washer
51	EN1-51	Muffler
50	EN1-50	Muffler gasket
Engine Cylinder Components		
53	EN1-53	Cylinder
54	EN1-54	Cylinder base gasket
55	EN1-55	Piston rings / set
56	EN1-56	Piston
58	EN1-58	Stop ring
59	EN1-59	Gudgeon pin
60	EN1-60	Gudgeon pin bearing
61	EN1-61	Gudgeon pin circlip



POLE SAW SPS260 & HEDGE TRIMMER ATTACHMENT

Item	Part No.	Description
Trimmer Components		
3	PS2-3	Grease nipple
4	PS2-4	Nut M6
6	PS2-6	Blade support
8	PS2-8	Blade assembly
9	PS2-9	Seal felt
10	PS2-10	Washer 6
11	PS2-11	Bolt
Gear Case Components		
12	PS2-12	Washer 4
13	PS2-13	Washer 4
14	PS2-14	Screw M4 x 12
15	PS2-15	Gear case cover
16	PS2-16	Gear case gasket
G	PS2-G	Gear case assembly
H	PS2-H	Handgrip assembly
27	BC2-59	Spring washer 6mm black
37	PS2-37	Handgrip
38	PS2-38	Screw
39	PS2-39	Swivel bracket
48	PS2-48	Connector shaft
	SPS2600001	Complete hedge trimmer attach



Picture for illustration purposes only.

