

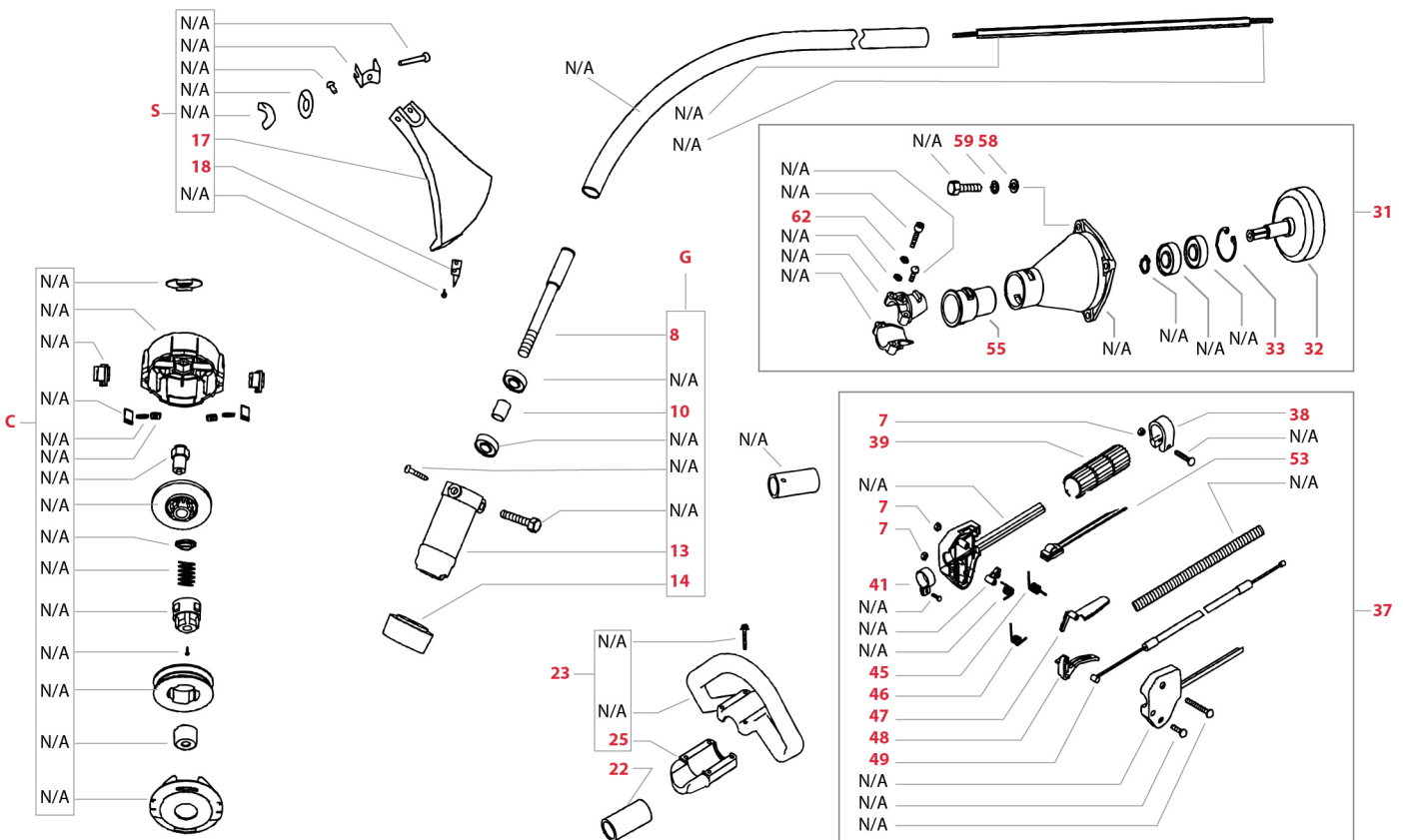
# BENT SHAFT BRUSHCUTTER BCB260



Picture for illustration purposes only.

Item No.	Part No.	Description
<b>Lever Assembly</b>		
37	BC2-LA	Lever assembly
38	BC2-38	Clamp
7	BC2-7	Nut M5
39	BC2-39	Rubber handle cover
41	BC2-41	Clamp
45	BC2-45	Spring
46	BC2-46	Spring
47	BC2-47	Safety lever
48	BC2-48	Throttle trigger
49	BC2-49	Throttle cable
53	BC2-53	Stop switch
<b>Holder Components</b>		
22	BCB2-22	Handle tube sleeve
23	BCB2-23	Handle assembly
25	BCB2-25	Handle tower
<b>Gear Head Assembly</b>		
G	BCB2-G	Gear head assembly
8	BCB2-8	Gear head drive
10	BCB2-10	Sleeve
13	BCB2-13	Gear head housing
14	BCB2-14	Holder / gear head drive

Item No.	Part No.	Description
<b>Clutch Components</b>		
31	BCB2-31	Clutch assembly
32	BCB2-32	Clutch drum
33	BC2-33	Circlip 35
55	BC2-55	Rubber cover
58	BC2-58	Washer 6
59	BC2-59	Washer 6
62	BC2-62	Washer 5
<b>Cutting Head Components</b>		
C	BCB2-C	Brushcutter head
	BCB2-CS	Brushcutter head - small
<b>Safety Guard Components</b>		
S	BCB2-S	Safety guard assembly
17	BCB2-17	Safety guard
18	BCB2-18	Safety guard blade



## 26CC ENGINE (to suit BCB260, BCS260, SPS260)

Item	Part No.	Description
<b>Air Filter Components</b>		
1	EN1-1	Air filter cover screw
2	EN1-2	Air filter cover
3	EN1-3	Air filter
5	EN1-5	Air filter cover base
<b>Carburettor Components</b>		
9	EN1-9	Carburettor assembly
10	EN1-10	Gasket carby side
11	EN1-11	Screw M5 x 20
12	EN1-12	Inlet manifold
13	EN1-13	Gasket engine side
<b>Flywheel Components</b>		
15	EN1-15	Screw M4x16
16	EN1-16	Flywheel cover
<b>Engine Cover Components</b>		
44	EN1-44	Top cover
45	EN1-45	Engine cover
<b>Ignition Coil Components</b>		
15	EN1-15	Screw M4x16
25	EN1-25	Primary cord grommet
26	EN1-26	Ignition coil assembly
27	EN1-27	Flywheel
77	EN1-77	Spark plug boot
<b>Crankcase Components</b>		
30	EN1-30	Washer
31	EN1-31	Front half crankcase
33	EN1-33	Crankcase gasket
34	EN1-34	Oil seal 12 x 22 x 7
35	EN1-35	Ball bearing 6001/P5
36	EN1-36	Crankshaft / conrod assembly
37	EN1-37B	Rear half crankcase
15	EN1-15	Guid plate screw M4 x 16
57	EN1-57	Crankshaft / flywheel key

Item	Part No.	Description
<b>Starter Pawl Components</b>		
38	EN1-38	Starter pulley
<b>Starter &amp; Starter Screw</b>		
42	EN1-42	Starter assembly
15	EN1-15	Screw M4 x 16
<b>Fuel Tank Components</b>		
62	EN1-62	Fuel tank cap assembly
69	EN1-69	Fuel tank
73	EN1-73	Fuel tank filter
74	EN1-74	Fuel tank grommet
75	EN1-75	Inlet fuel hose
76	EN1-76	Outlet fuel hose
<b>Clutch Components</b>		
19	EN1-19	Clutch assembly
<b>Spark Plug Components</b>		
48	RCJ6Y/BPMR7A	Spark plug
<b>Muffler Assembly</b>		
52	EN1-52	Screw M5x55
30	EN1-30	Washer
51	EN1-51	Muffler
50	EN1-50	Muffler gasket
<b>Engine Cylinder Components</b>		
53	EN1-53	Cylinder
54	EN1-54	Cylinder base gasket
55	EN1-55	Piston rings / set
56	EN1-56	Piston
58	EN1-58	Stop ring
59	EN1-59	Gudgeon pin
60	EN1-60	Gudgeon pin bearing
61	EN1-61	Gudgeon pin circlip

